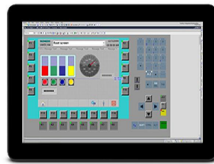


BORNE FILE D'ATTENTE WITH PRINTER 80mm

Model SK-21.5GB



Features

- Industrial 21.5" IPS LCD with 50K Lifetime LED Backlight
- Intel® Core® i3 3rd generation dual-core Processor with 4GB DDR3 SDRAM 128GB SSD.
- Supports wide operating temperatures -10~50°C
- IP65 certified front panel protection
- 10 Point Capacitive G+G Touch Screen

senke®

Introduction

The SK-21.5GB industrial touch panel pc with a 21.5" IPS LCD screen, low power embedded Intel® Core® i3 3rd Generation Dual-core Processor with 4GB DDR3 SDRAM,128GB SSD provides computing performance in a compact system. To enhance its durability, the SK-21.5GB is designed with IP65 front protection, aluminium front bezel and 10 point Capacitive G+G touch screen.It supports wide operating temperatures -10~50°C and includes full size mini-PCIe slot to extend the functionality and meet a variety of automation applications needs.

Specifications

General

Certification	CCC,CE, FCC ,ISO9001
Cooling system	Fan
Dimensions	349.3 x 559 x 65.5 mm
Enclosure front bezel	Front bezel : Aluminum Back housing : Cold rolled steel plate
Mounting	Default wall mounting bracket Microsoft ® Windows10,64bit
OS support	Default windows 10 English professional trial Version
Optional color	Silver or black
Weight (Net)	6 kg
Weight (Gross)	7.5 kg
Package size	63.5 x 43.5 x 14.5 cm

System Hardware

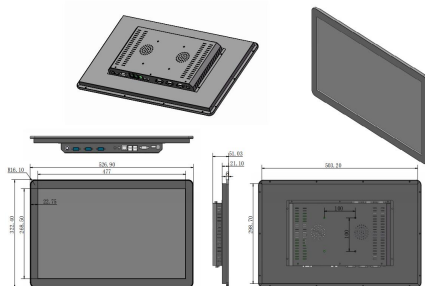
CPU	Intel® Core® i3 3rd generation Dual-core Processor
Memory	4GB DDR3
Storage	128GB SSD
Expansion Slots	Full-size Mini PCI-E
LAN	100 Base-T x1

I/O

COM x2 (RS232)
Power x1
HDMI x1
VGA x1
USB x4
LAN x1 (RJ-45)
Audio input x1
Audio output x1
Other customized Interface available

Drawing

Unit (mm)



LCD Display

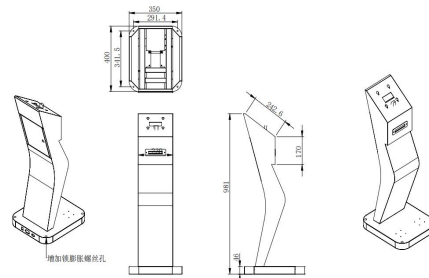
Display type	IPS LCD screen
Display size	269.1 × 477.6 mm (H×V)
Resolution	1920 × 1080
Max. colors	16.7 M
Luminance cd/m²	250
Viewing angle (H/V°)	178°/178°
Backlight life	50000 hrs
Contrast ratio	1500:1
Aspect ratio	16:9
Lifespan	36 million touches at single point
Touch type	10 Point Capacitive G+G touch screen
Response	≤5 ms

Environment

Humidity	10~ 95% RH @ 40°C, non-condensing
Ingress Protection	Front panel: IP65
Operating Temperature	-10 ~ 50°C
Storage Temperature	-30 ~ 70°C

Accessories

Adaptor (DC 12V) (cable 1 meter)
Power plug (cable 1.2 meter)
Default wall mounting bracket
8mm thermal printer



Imprimante	Thermique avec papier standard 8cm	Largeur 8cm
	Anti-bourrage	Oui
	Autocoupure	Plus que 7,000,000 cuts
	Détection et alerte fin du papier	Oui
	Capacité du diamètre du rouleau papier	120 millimètres
	Qualité	203dpi